

Contact

International Office

Silke Viol

summerprogram@tu-dortmund.de

TU Dortmund University

Emil-Figge-Straße 61

D-44227 Dortmund

Germany



Further Information

About the ISP:

www.summerprogram.tu-dortmund.de

About TU Dortmund University:

www.tu-dortmund.de

About the City of Dortmund:

www.dortmund.de

Put Germany on your resume!

14th International Summer Program ISP 2016

Track A: Engineering

Track B: German & European Studies

TU Dortmund University, Dortmund, Germany

June 2 – July 31, 2016



Photo by M. Vollmer

Welcome to the International Summer Program!

TU Dortmund University is part of the Ruhr Academic Triangle, in the heart of one of Europe's most important metropolitan areas which also featured the European Capital of Culture in 2010. The International Summer Program (ISP) is designed to offer excellent students innovative, hands-on study opportunities in upcoming fields designed to build your resume and experience, extend your network, and give you a unique European/transnational set of skills in your field of study. Credits will transfer directly to your home institution after the successful completion of the program.

All courses are in English, and you will have wonderful opportunities to acquire basic German language skills and develop your German cultural competences.

A unique feature of ISP is that international summer program classes are regular classes integrating German and international Dortmund students.

Timetable

Arrival (before 4 pm)	June 2, 2016
Orientation Session (10 am)	June 3, 2016
Academic Orientation (11 am)	June 3, 2016
Classes	June 6 – July 22, 2016
Exams	July 18 – July 30, 2016
End of Program / Departure	July 31, 2016

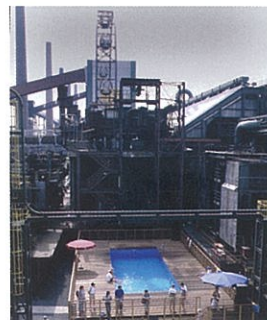
Program Features

German Language Course

The German language course is a mandatory part of the program. Language classes on different levels (beginners, intermediate) will be offered to improve existing language skills or help you to get started in German. From June 6 to July 20 the German language course will be part of your schedule twice a week for three hours each.

Cultural Program and Excursions

A cultural program and excursions are included in the program. You may explore the Ruhr Area, Germany's largest – and greenest – metropolitan area, historical cities like Cologne, and participate in a number of activities in and around Dortmund such as a visit to Germany's largest soccer stadium or the impressive Art Nouveau coal mine at Zeche Zollern.



Doubles Program

You will be teamed up with German students who will help you integrate into campus and city life.

Research Project

You can also undertake a research project in addition to or instead of the regular ISP program. This means that you can do your research project with a specialist in your area of interest and are also welcome to take part in the German language course and the cultural program and excursions.



Track A:

Engineering

Features

- You can select from a catalogue of courses taught in English in the following fields:

Applied Mathematics	Automation & Robotics
Biochemical & Chemical Engineering	Mechanical Engineering Computer Science
German Culture	Business & Economics

- Focus on Engineering and Business & Economics complemented by two mandatory courses in German language and culture
- You will be fully integrated in regular classes and campus life
- Hands-on project work to gain practical experience
- Computer labs are integrated in several courses
- You will have an exam period after regular classes end

Target Group

This track is designed for students from partner universities from all over the world in the third or fourth year. It is also suitable for graduate students. Track A students are also welcome to enrol in German & European Studies courses.



Track B:

German & European Studies

Features

- You can select from classes mostly dealing with German culture in European and global contexts
- You will be fully integrated in regular classes and campus life
- If you have knowledge of German, you will be able to register in regular Dortmund classes as well
- In the cultural studies classes, ISP students will join German students in order to explore together and from different points of view new developments in German and European culture
- If you are interested in a special academic topic, you will be assisted in independent study projects by professors and specialists from different fields



Target Group

This track is offered for American and other international students interested in German language, literature and culture in European and global contexts. Track B students are also welcome to enrol in Engineering and Business & Economics courses.

Application & Deadline

You may apply between **December 15, 2015** and **February 12, 2016** via the following website:
www.summerprogram.tu-dortmund.de

As a student from a partner university, you need to be registered at your own university and to be nominated by your study abroad coordinator via e-mail. In exceptional cases, students from non-partner universities may inquire about the possibility of participating as guest students. Please get in touch with the International Office prior to your application.

Expenses

Since this is a program mainly for students from partner universities, you only pay the costs for the ISP-service package. Academic and language courses are covered through the exchange agreement between your home university and TU Dortmund University and the tuition you are paying there. The service package at the price of 1,450 Euro includes the following benefits:

- Accommodation (from June 2 to July 31, 2016)
- Health insurance (from June 2 to July 31, 2016)
- Public transportation ticket
- Cultural program and excursions
- Pick-up service from Dortmund's central train station

Additional costs of living (food & incidentals) are approx. 250 Euro per month.



The University

TU Dortmund University was founded in 1968, a time of fundamental change in Germany's higher education landscape. Today TU Dortmund University is dedicated to a unique cross-weaving of natural/technical sciences and social sciences/cultural studies. Interdisciplinary cooperation produces innovative synergies in research and education.



The City

A large and diverse city in the Ruhr valley, Dortmund offers all the advantages of urban life in a metropolitan area of some 6 million people. At the same time, half of the city's spaces are green, a landscape of forests, parks, fields and beer gardens. Whereas the traditional coal and steel mills have been transformed into creative spaces and cultural hotspots, Dortmund has retained its soccer culture with some of Germany's most fun and enthusiastic soccer fans celebrating their team in Borussia Dortmund's 80,000 seat stadium. When you come to Dortmund, you will recognize immediately that you are not in a typical study abroad location. It is an untrodden territory you can discover for yourself, making new friends in a remarkably welcoming environment.

