

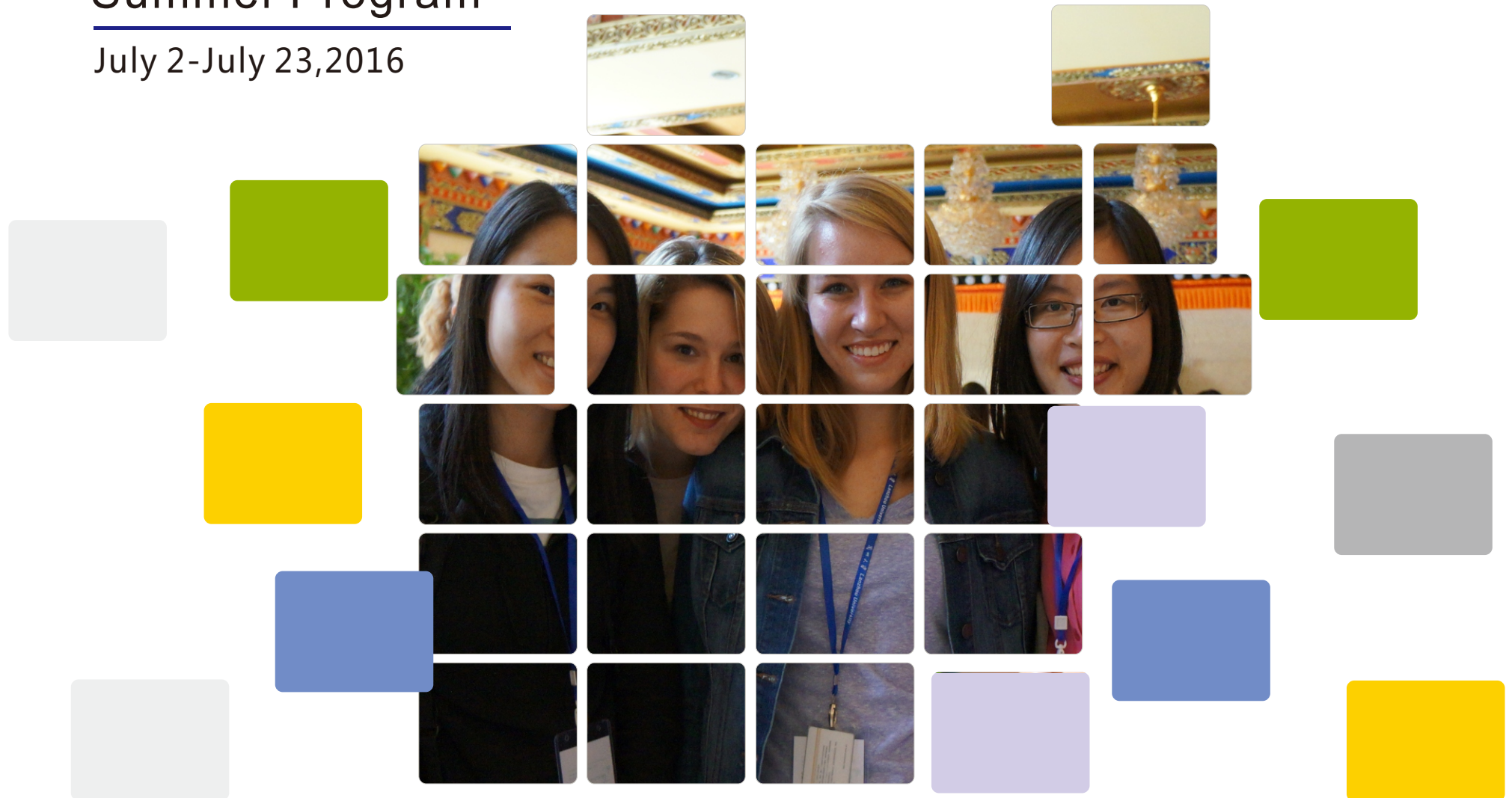
2016

Lanzhou University International Summer Program

July 2-July 23, 2016



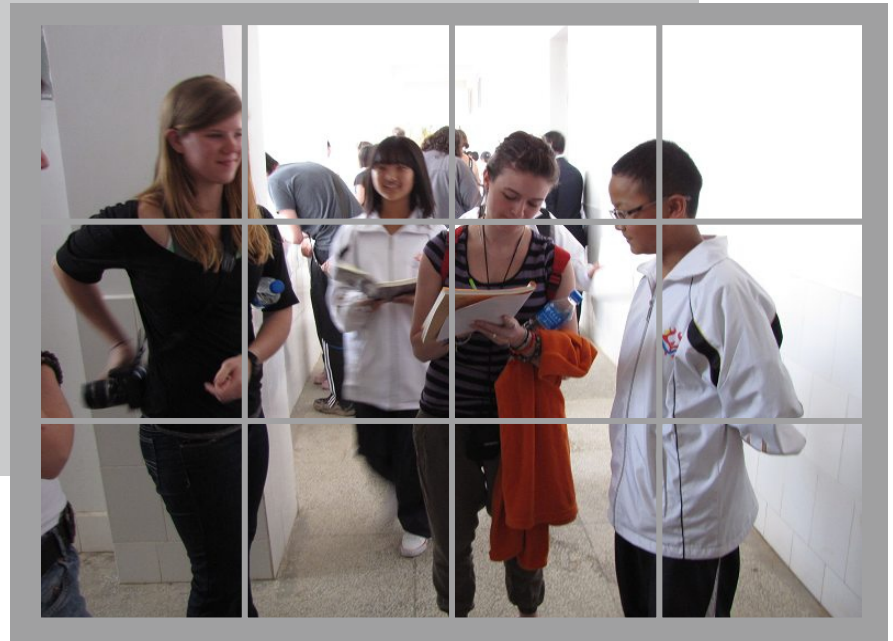
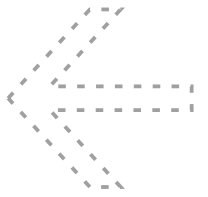
LANZHOU
UNIVERSITY





Application Documents

- ◆ LZU Nomination Form
- ◆ Completed Application Form
- ◆ Resume
- ◆ Photocopy of Passport



1 Program

LZU International Summer Program is designed to give international students an introduction to Chinese history, culture and scenic landscape of Northwest China. It includes lectures in the fields of Chinese Language, Culture and Society, as well as several field trips. You are warmly welcomed to learn the language and culture through our summer program!

2 How to apply (Application Deadline April 10, 2016)

The application documents should be sent via email to the International Office at incoming@lzu.edu.cn. Please note that the application materials have to be sent through the corresponding office or person of your university.



3 Field Trips

jiayu Pass and Dunhuang (3 days program)

Jiayu Pass is the first pass at the west end of the Great Wall of China, and Mogao Grottoes is the best known Chinese Buddhist Grottoes. You will get the chance to experience the two historic treasures which were classified as World Heritage by UNESO.

Xiahe (2 days program)

Xiahe is a small, lively town situated in a valley of the Ganan Tibetan Autonomous Prefecture. The town centers upon the famous Labrang Monastery. The population here is diverse with Tibetan, Han, and Hui (Muslim), making this a good place to observe people of different ethnic groups in Northwest China.

4 Course Offerings

No.	Time	Course
1	8:30-10:00	Chinese Changes and the Silk Road since 1840
2	10:30-12:00	Ethnic minorities in Northwest China
3	14:00-15:00	Chinese Kungfu
4	15:30-17:00	Chinese Language

*Students who complete the courses will receive an official transcript as well as a certificate of exchange at the end of the program.

Saturday

July 2

Arrival Day



Sunday

July 3

10:00
Orientation and
Campus Tour
18:00
Welcoming Party

Monday

July 4

Class 1

Tuesday

July 5

Class 2

Wednesday

July 6

Class 3

Thursday

July 7

19:30-11:00
academic forum
14:00-15:30

[Chinese calligraphy](#)

Friday

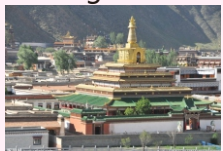
July 8

Field Trip: Sangke
Grassland



July 9

Field Trip: Xiahe
Labrang Lamasery



July 10

Free time

July 11

Class 5

July 12

Class 6

July 13

Class 7

July 14

19:30-11:00
academic forum
14:00-15:30

[Chinese Papercut](#)

July 15

Field Trip:
Jiayu Pass



July 16

Singing Sand Mountains
& Crescent Spring
& Mogao Cave



July 17

Free time

July 18

Class 9

July 19

Class 10

July 20

Class 11

July 21

19:30-11:00
academic forum
14:00-15:30
Local folk song learning

July 22

Final Test
9:00-16:00
Graduation Party:
19:00-21:00

July 23

Departure





5 Housing

All participants will be assigned a doubled-occupancy room in the LZU on-campus residence (2 students per room). Rooms are furnished with beds, mattresses, cabinets, desks and chairs. Cable internet service is available, but there is no wifi service.

6 Tuition & Fees

Tuition	0	Waived for students from partner universities
Registration Fee	CNY 1000	
Housing Fee	0	Free for students from partner universities
Study Materials	0	Free for students from partner universities
Field Trips	0	Free for students from partner universities
Foods and any other costs	About CNY 2000	The cost will depend on your spending habits
Total	CNY 3000	

7 LZU Buddies

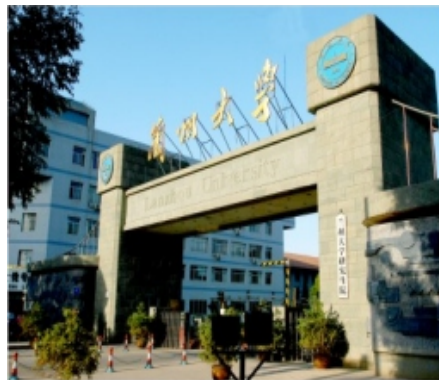
Your personal guide to LZU and Chinese culture: your buddy will contact you via e-mail prior to your departure for China.





Gansu province preserves the most colorful and profound Chinese culture and tradition. Situated along the Silk Road, Gansu was an economically important province and a cultural transmission

path in ancient China. The historic sites in Gansu, such as the Mogao Grottoes, the Jiayu Pass of the Great Wall, the Maijishan Caves, attract hundreds of thousands of visitors around the world every year.



Founded in 1909, Lanzhou University is one of China's oldest institutions of higher learning. Since then, it has always been recognized as one of northwestern China's premier universities.

Lanzhou University is included amongst the top 500 best global universities (U.S. News & World Reports Ranking, 2015).

Lanzhou University ranks Top 8 among Chinese universities (Nature Index 2015).



LANZHOU
UNIVERSITY

Contact Information

Office of International Exchange and Cooperation
222 South Tianshui Road, Lanzhou, Gansu,
730000, P. R. China

TEL: +86-931-8915626

Fax: +86-931-8617355

E-mail: incoming@lzu.edu.cn

Web Site: <http://faoffice.lzu.edu.cn/gjcheng>